



Scott DuBose Photography - Copyright 2017

## SWING DOORS | PRODUCT SOLUTIONS



**SWING DOORS** make a lasting first impression that compliments your living space and overall design aesthetic. Engineered modern profiles increase glass sizes to optimize a doors viewing area. Ideal for residential or commercial applications, our swing doors make a statement as an entry door, provide division within interior spaces or offer passage to a balcony, deck or patio. These high insulating products meet the demanding requirements for thermal insulation, stability and security that are on par with the strictest standards.



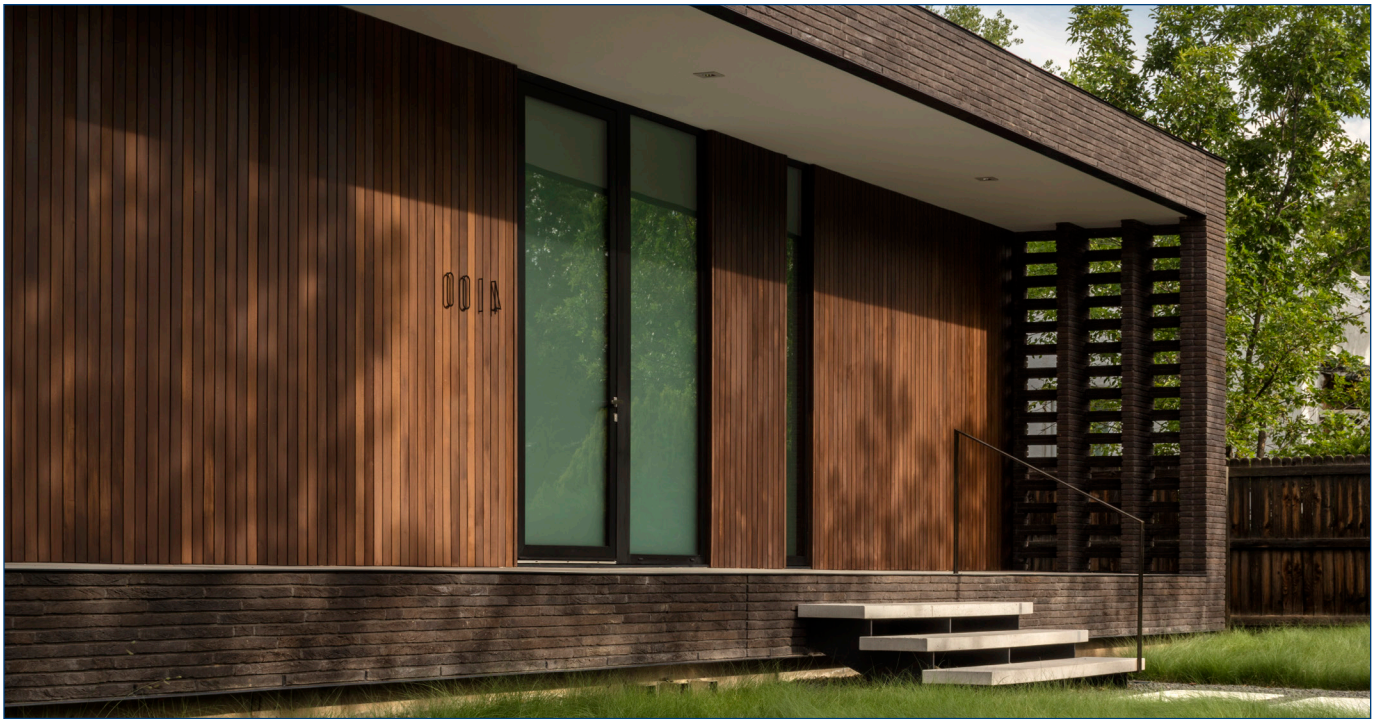
Architect: FLUX-architecten

### FEATURES / HIGHLIGHTS

- Single / Double Panel Doors up to 10 ft. High
- Large Single Panel Pivot Doors
- Optional Concealed Hinges
- Purity & Touch Handles
- Classic (Slim Steel Look) Design Variant
- Seamlessly Combines w/ Window Solutions

## WINDOW & DOOR PRODUCT SOLUTIONS

HARMONIOUSLY WORKING TOGETHER FOR MAXIMUM VISUAL APPEAL



## SWING DOORS | PRODUCT SOLUTIONS

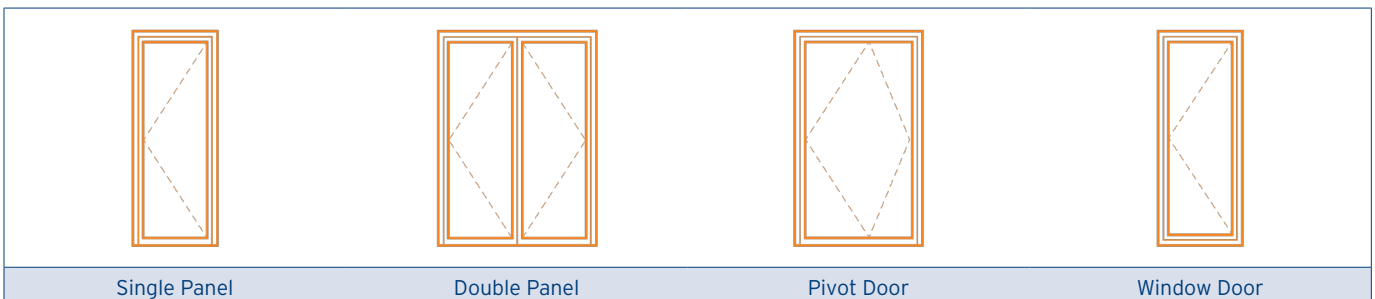


**STYLISH PIVOT DOORS.** A unique and elegant option yielding wider single door leaves than a traditional single panel door. With a hinge mechanism within the floor and header, these doors utilize a pivot motion to open with a clear opening typically 2/3 of the door leaf. With a flush threshold, these doors are ideal for interior applications or covered entry ways.

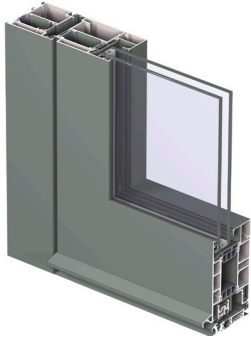
**COMMANDING DOUBLE DOORS.** Our French style double doors have height capabilities up to 10ft high, out pacing the industry standard. These doors help set the stage for a grand entrance or are a great alternative to sliding or folding doors

**WINDOW DOORS.** These functional solutions utilize window frame and vent profiles paired with side mounting door hardware to provide superior air and water tightness versus a traditional swing door. These are ideal for secondary doors that double as floor to ceiling windows.

## OPENING CONFIGURATIONS

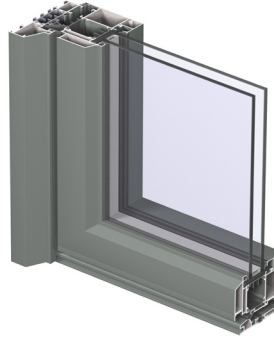


## CONCEPT SYSTEM **CS 77**



**CS 77** has a robust functional profile yielding the largest panes of glass matching a variety of different building types with a range of solutions for inward and outward opening configurations, including window & pivot doors.

## SLIMLINE **SL 38 CLASSIC**



**SL 38 CLASSIC** is a perfect harmony between durable material and demanding architectural challenges; this door system, combines elegance and comfort featuring a classic design with narrow sight-lines for a steel look with superior thermal performance.



**OPTIONAL CONCEALED HINGES.** Every swing door we build is designed to fit your project perfectly. When you have a Reynaers swing door installed into your home, it will operate flawlessly every time you use it. Our **CONCEALED HINGES**, available on CS 77 only, are not only aesthetically remarkable, but are adjustable on all three axis to ensure impeccable operation. The offset design yields a wider clear opening than a door of similar size with barrel or surface mounted hinges.

**DESIGNER HARDWARE.** PURITY features a timeless, minimal, and sleek design comprised of a material equivalent to 316 stainless steel for maximum durability. TOUCH is a contemporary line of handles with a balance between function and design, available in a powder coat finish to match your profiles. All doors come standard with Multi-Point locks, optional key or thumb turns with interior and/or exterior locking capabilities.

Profile Dimensions			System Depth (in.)	Visible Width (in.)		Height (in.)	Min-Max Sizes (in.)									
				Frame-Vent	Frame-Vent		Double Dr.	Threshold	Single Panel				Double Panel			
									Vent-Vent	Min		Max		Min		Max
							W			H	W	H	W	H	W	H
Swing Door	<b>CS 77</b> Functional Frame	Swing	Open In	2 11/16	5 15/16	8 1/4	11/16	24	82	57	120	48	82	100	120	
			Open Out	2 11/16	5 15/16	8 1/4	11/16	24	82	57	120	48	82	100	120	
	Pivot	Open in	2 11/16	6 3/4	N/A	1/2	40	82	72	108	N/A					
		Open Out	2 11/16	6 3/4	N/A	1/2	40	82	72	108	N/A					
Swing Door	<b>SL 38</b> Large Classic Frame	Swing	Open In	4 3/4	4 3/8	6 11/16	11/16	24	82	50	100	48	82	100	96	
			Open Out	4 3/4	4 3/8	6 11/16	11/16	24	82	50	100	48	82	100	96	
Window Door	<b>CS 77</b> Functional Frame	Swing	Open In	3	5 9/16	8 3/4	2 11/16	24	72	48   57	120   96	48	72	108   96	94   120	
			Open Out							48   57	120   96			108   96	94   120	

Performance Specifications			Swing Door				Window Door	
			CS 77		SL 38		CS 77	
Icon	Specification	Glazing	Double	Triple	Double	Triple	Double	Triple
		Thermal Insulation (Btu/hr-ft <sup>2</sup> -°F)	Open In	Uw	0.3	0.25	0.3	0.25
SHGC	0.16			0.12	0.19	0.18	0.16	0.12
Open Out	Uw		0.35	0.29	0.31	0.26	0.31	0.25
	SHGC		0.16	0.12	0.16	0.17	0.16	0.12
Acoustic Performance ASTM E90-09/1332	STC	39		N/A		40		
	OITC	36		N/A		36		
Air Tightness (cfm/ft <sup>2</sup> )		0.02		0.05		0.3		
AAMA Rating		R PG15 (Open Out)		CW PG30 (Open In) CW PG40 (Open Out)		CW PG50 (Open In   Open Out)		
Water Tightness (psf)		2.92		11.28		9.4		

All results based on gateway sizes; vary depending on glass/profile combinations | Above Uw & SHGC values do not necessarily work in combination

**REYNAERS ALUMINIUM** is a symbol of high quality architectural windows and doors.

Reynaers continually leverages the latest world-wide technology to evolve our products into engineering marvels that are aesthetically breathtaking.

**THERMALLY BROKEN.** Reynaers exclusive state-of-the-art thermally broken technology uses fiberglass reinforced polyamide strips, providing a best-in-class insulating system for top-notch energy performance.

**ROBUST CORNER CONNECTIONS.** Reynaers superior fit & finish is most evident through the quality of our corner connection. Our corners are joined using corner cleats and keys. Profiles are then crimped with epoxy to tightly secure profiles in place.

**ENGINEERED & TESTED.** Reynaers products are engineered and tested to handle all types of environmental conditions, incorporating design pressures certified by AAMA (American Architectural Manufacturers Association) for structural performance with exceptional air and water tightness. Testing reports / product simulations are available for various product configurations.

**DRY GLAZING.** Dry glazing offers easier installation in any weather condition and allows for simple on-site glass replacement without requiring removal of frames or panels. This method provides the ultimate in air & water infiltration performance with gaskets on both sides of the glass.

**HIGH PERFORMANCE GLASS.** Reynaers products feature Guardian® glazing and Cardinal® glass. These panels include double or triple pane Low-E glass for maximum heat resistance and energy performance. Our systems have been certified by the NFRC with SHGC coefficients and U-values which go above & beyond most local code requirements.

DESIGNED IN EUROPE,  
WELL CRAFTED IN AMERICA